

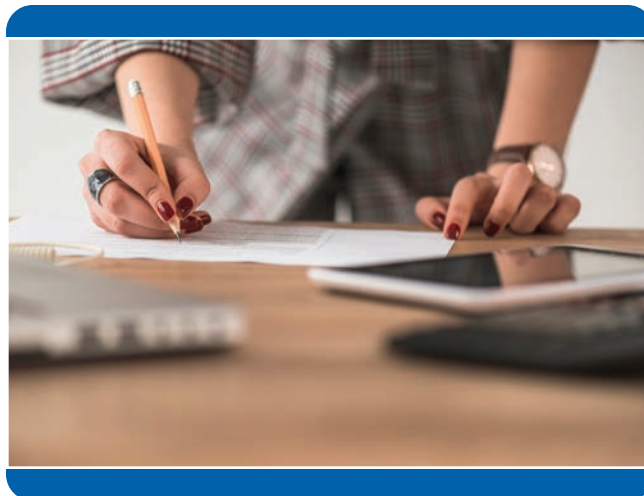


BE SURE TO CHECK THE FOLLOWING:

PLAN

Have you:

- ☐ Applied for and been granted your student visa?
- ☐ Booked your flight to arrive in Hancock, Michigan a few days before school starts?
www.houghtoncounty.org/flights-arrivals.php
- ☐ Obtained some U.S. currency for your arrival?
The suggested amount is \$250.
- ☐ Organized your airport pick-up?
- ☐ Left copies of your passport, visa and other important documents at home?
- ☐ Booked temporary accommodation close to Finlandia (if necessary)?
www.finlandia.edu/admissions/visit-campus
- ☐ Familiarized yourself with the overall cost of living in the United States and Hancock, Michigan and set yourself a realistic daily budget?
www.numbeo.com/cost-of-living/compare_countries_result.jsp?country1=United+States&country2=Finland
- ☐ Checked what you can and can't bring into the US?
<https://help.cbp.gov/app/answers/list/search/1/kw/Duty%20Free%20allowances%20for%20visitors/suggested>
- ☐ Created a financial plan to cover your living costs?
- ☐ Talked to someone about how you are feeling about leaving home? It's okay to feel sad, tired, excited, frustrated, unhappy and confused – you may even be experiencing these feelings already.



PREPARE

- ☐ Bring some things with you that will help you feel close to your family and friends, such as photos or special items. However, don't bring anything that is irreplaceable. Leave your valuables at home!
- ☐ Bring some of your favorite home recipes. You can cook in the residence hall kitchens. There is one on every floor.
- ☐ Get yourself ready for life in the United States and at the university.
www.internationalstudent.com/study_usa/way-of-life
- ☐ Become familiar with the academic writing style in the United States by reading American language academic articles, journals and textbooks.
- ☐ Improve your English skills by practicing your written and spoken English.



EXCESS BAGGAGE

- ☐ You will need to balance what to pack with the amount of baggage you can manage and the weight limits imposed by your airline. To avoid paying extra excess baggage fees:
 - Check your maximum baggage weight limit with your airline carrier before you finalize your packing.
 - Remember – you are only here for a semester. Your bedding and towels are provided. Just bring the items you really need. You can always purchase clothing in the United States.



PACK

Items to keep on your person during travel:

- ☐ A valid passport
- ☐ Your student visa and entry permit
- ☐ A copy of your electronic Confirmation of Enrollment (COE)
- ☐ Your Finlandia acceptance form
- ☐ Any proof of payment
- ☐ Adaptor plugs for electrical items
- ☐ Evidence of sufficient funds to support yourself during your study period
- ☐ Other official documentation such as:
 - International driver's license (with English translation if required)
 - International ID card
 - Certified copy of your birth certificate with English translation if required

- ☐ Written references in English from a previous employer if you plan on looking for part-time work. You should also bring a copy of your resume.
- ☐ Medical records, especially a vaccination history for yourself and of medicine that may be needed in America. Please check the Customs and Border Patrol website for information on the medicines that can be brought into the United States.

https://help.cbp.gov/app/answers/detail/a_id/1160/~travelling-with-medication

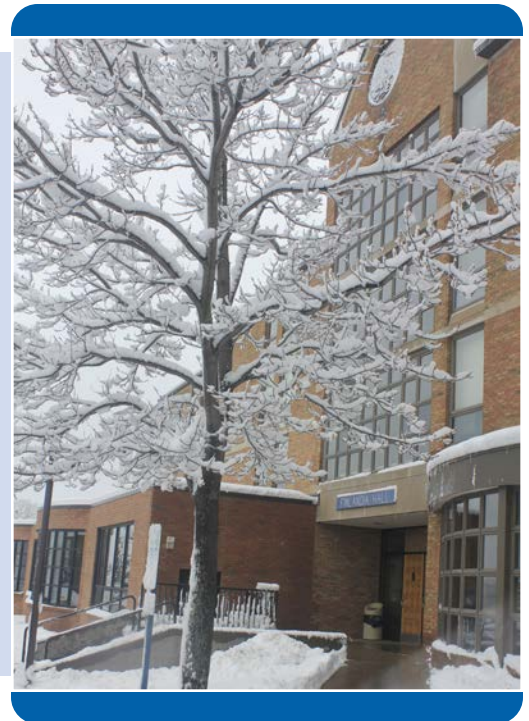
- ☐ Contact details for:
 - Finlandia University
 - Your embassy or consulate in America

CLOTHES AND CLIMATE

Before you pack, consider Michigan's changing weather. Remember – the climate is very similar to that of Finland, however, we get more snow and it's usually a bit colder in Winter.

We have four distinct seasons:

- Summer (June, July, August): 21-25°C with high temperatures of 25-30°C
- Autumn (September-October): 10-20°C (this can also be our wettest season)
- Winter (November, December, January, February March): -5*-1°C (could be much colder at night). December and January are our heaviest snow months, with snowfall averaging 1300-1800 mm
- Spring (April, May): 8-16°C



Ms. Cathleen (Cat) Fuller, M.A.

Director for Global Initiatives
cathleen.fuller@finlandia.edu
(906) 487-7367

FINLANDIA
UNIVERSITY